

Kalmar DRG100-54S6
Lifting data
DRG100-54S6

Lifting capacity at load centre L4, rated – at max. lifting height (kg)	10000 - 10000
Lifting capacity at load centre L5, rated – at max. lifting height (kg)	9000 - 9000
Lifting speed, unloaded – at 70% of rated load (m/s)	0.46 - 0.41
Lowering speed, unloaded – at rated load (m/s)	0.74 - 0.55
Lowering speed, unloaded – at 70% of rated load (m/s)	0.74 - 0.74

Driving data

Travelling speed forward, unloaded – at rated load (km/h)	30 - 30
Travelling speed backward, unloaded – at rated load (km/h)	30 - 30
Gradeability at 2 km/h, unloaded – at rated load (%)	26 - 19
Gradeability max., unloaded – at rated load (%)	31 - 23
Drawbar pull, max. (kN)	124

Weight of trucks

Service weight (kg)	38900
Axle load front at load centre L4, unloaded – at rated load (kg)	22300 - 38600
Axle load front at load centre L5, unloaded – at rated load (kg)	24100 - 40700
Axle load front at driving position according to ISO22915-12, and rated load (kg)	36200
Axle load rear at load centre L4, unloaded – at rated load (kg)	16700 - 10400
Axle load rear at load centre L5, unloaded – at rated load (kg)	14900 - 7300
Axle load rear at driving position according to ISO22915-12, and rated load (kg)	12800

Engine

Manufacturer / model	Volvo / TAD-871-VE
Fuel / type of engine	Diesel / 4 stroke
Emission stage / approval	EU Stage IV / EPA Tier 4 Final
Number of cylinders / displacement (liter)	6 / 7.7
Power rated @ revs, ISO 3046 (kW@rpm)	185 @ 1600-1900
Torque max @ revs, ISO 3046 (Nm@rpm)	1160 @ 1100-1500
Alternator, type - power (W)	AC - 3600 (28 / 130)
Starting battery, voltage - capacity (V – Ah)	2x12 / 135-145
Fuel consumption, normal driving (l/h)	7 - 14
DEF consumption, normal driving (% of diesel)	1 - 5

Transmission

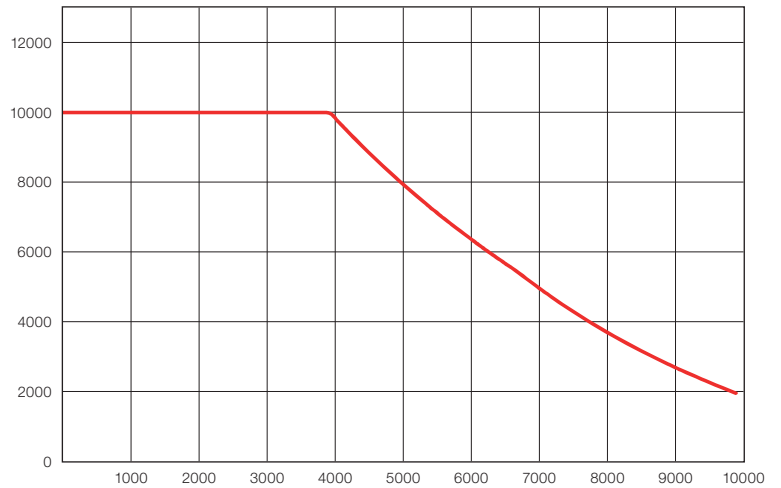
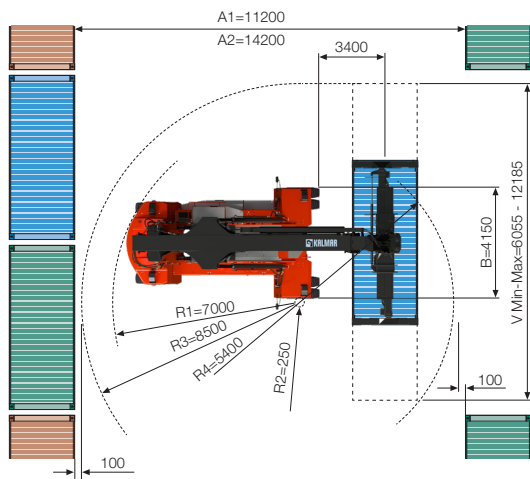
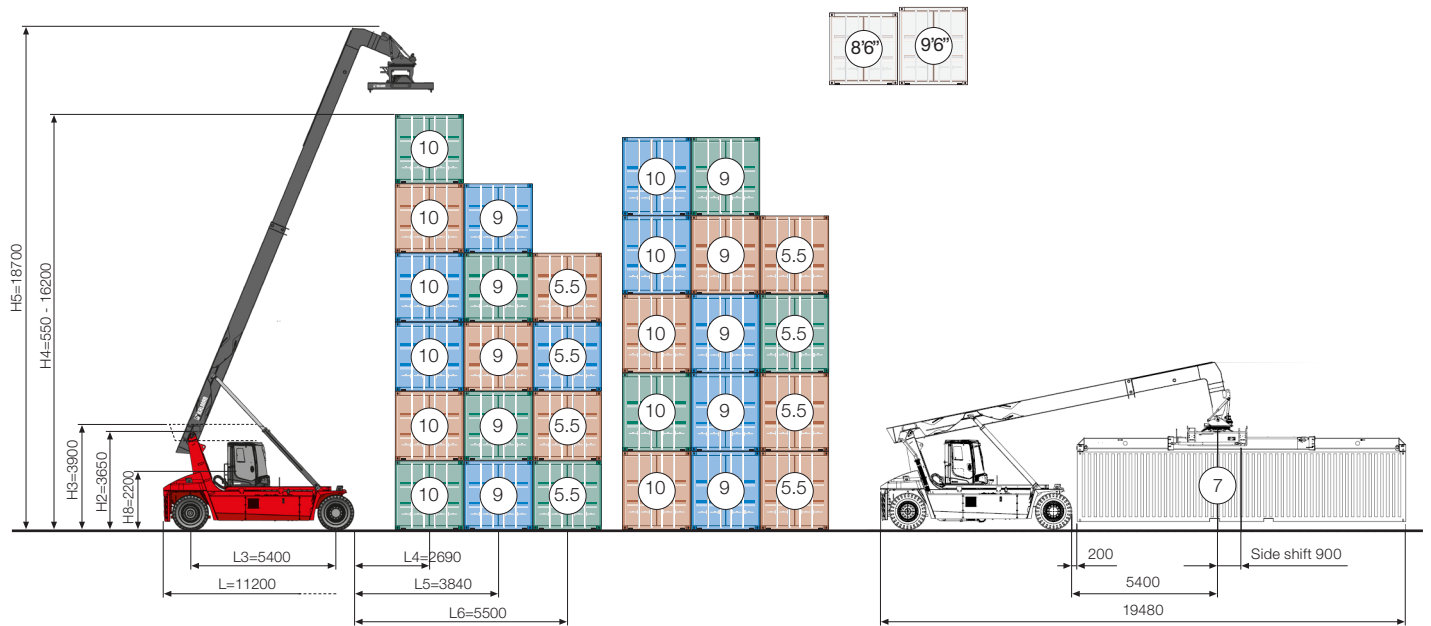
Manufacturer / model	Dana / LTE-14456
Clutch, type	Torque converter with Lock-Up
Gearbox, type	Hydrodynamic Powershift
Number of gears, forward - reverse	4 - 4
Driving axle, manufacturer / type	Kessler D81 / Differential and hub reduction

Wheels

Tyre, type	Tubeless - Diagonal - E4
Dimensions, front – rear (inch)	14.00x24 – 14.00x24
Rim dimension, front – rear (inch)	10.00x24
Number of wheels, front – rear (*driven)	4* - 2
Pressure (MPa)	1.0

Miscellaneous

Steering system, type – maneuvering	Electro-hydraulic servo - Steering wheel with orbitrol
Service brake system, type – affected wheels	Wet disc brakes - Drive wheel
Parking brake system, type – affected wheels	Spring brake - Drive wheel
Noise level EN12053 with ECO modes - equivalent inside cabin LpAZ (dB(A))	69 - 71
Noise level EN12053 with ECO-modes - equivalent outside cabin LwAZ (dB(A))	105 - 107
Max. hydraulic pressure (MPa) boom / spreader	23.0
Fuel volume (l)	525
DEF volume (l)	37
Hydraulic oil volume (l)	600 Common + 110 Brake system
Overload protection	Electronic



Dimensions

		DRG100-54S6
Boom angle (°)	α	0-67.5
Attachment rotation, CW – CCW (°)	β	195 - 105
Sideshift \pm (mm)	V1	± 1000
Boom stroke / outreach (mm)		7200
Number of rotation motors and rotation brakes		2 + 2
Spreader lifting eyes, in boom nose		4
Spreader side tilt angle / tilt type		$\pm 5^\circ$ / MPS
Track (c-c), front – rear	S	2950 - 2600
Ground clearance, min. (mm)		350

The designs and materials specification are subject to alternation without prior notice.
Tolerances according to K-standard 95430.0008/0009.



Kalmar (Nasdaq Helsinki: KALMAR) is moving goods in critical supply chains around the world, with the vision to be the forerunner in sustainable material handling equipment and services. The company offers a wide range of industry shaping heavy material handling equipment and services to ports and terminals, distribution centres, manufacturing and heavy logistics. Headquartered in Helsinki, Finland, Kalmar operates globally in over 120 countries and employs approximately 5.000 people. In 2023, the company's sales on a carve-out basis totalled approximately EUR 2,0 billion.
www.kalmarglobal.com

Kalmar Solutions AB
Movägen 1
SE-341 32, Ljungby, Sweden
tel. +46 372 260 00
www.kalmarglobal.com